

# Hide Industrial Machinery Co., LTD Company information





**We have been engaging in piling industry**





**SUSTAINABLE DEVELOPMENT GOALS**  
17 Sustainable Development Goals to change the world



<b>Universality</b>	All countries act together
<b>Social inclusion</b>	Reflecting on the ideology of human security "No man leaves behind"
<b>Participation</b>	Each stake holder have their roles
<b>Integrity</b>	Integrity and involvement in Society, Economy and Environment
<b>Transparency</b>	Regular follow-up

## In order to protect the future of the environment



Hide Industrial Machinery Co., LTD  
Chief Executive Officer: Eiji Kawata

Our company mainly engages in piling construction since company establishment over 30 years ago, we have grown so much after going through considerable hardship. We greatly appreciate all of your help and support.

This time, as a construction distributor in Gumma, we introduce a new construction method for soil stabilization called HySPEED/ Natural crushed stone compaction piles construction method. We are eager to reform ourselves from the lack of environmental awareness as we take on our social responsibilities. As a result, we are grateful for the HySPEED method, which utilized only natural material to protect the environment.

We think it is necessary for us to consider the nature furthermore and devote ourselves to protect every aspect of environment. We are going to make extra efforts to meet your demand, we greatly appreciate your continuous support and advice.



for over 30 years and we are operating.

### Company history

Hide Industrial Machinery Inc., was established on January 19, 1989  
Company name changed to Hide Industrial Machinery Co., LTD on January 19, 2001  
Base corporation was established in 2001

### Company outline

Name of the company: Hide Industrial Machinery Co., LTD  
Address: NY tenant building Suite 203, 485-2 Toriyama Shimo-cho, Ota-city, Gumma-prefecture  
Phone: 81-276-33-9155 Fax:81-276-33-9156  
Web: <http://www.hide1191.jp>

Company establishment: January 19, 1989  
Capital: 10,000,000 JPY

Name of CEO: Eiji Kawata

End of company fiscal year: The end of September

Main banks: Gumma bank, Godo branch, Saitama Resona Bank, kumagaya branch  
Permission in construction industries: Permission from Gumma-prefecture governor(General-29) #17032 Earth work industries

Type pf business:

1. Down the hole hammer method
2. Steel sheet pile•H-type steel•Insert and remove/extract concrete sheet pile construction
3. MOVAX Method
4. Earth retaining construction
5. Assembling and disassembling of temporary pier construction. Sales and lease of steel products•Preparing accounting documents for earth retaining construction
6. Pile extracting construction
7. Cement milk method
8. Various types of anchor construction
9. Caisson type piles construction
10. Cast-in-place piles construction
  - All casing method•Benoto method
  - Full slewing all casing method
  - Swing type all casing method
11. Improving ground resistance construction
  - Natural crushed stone compaction piles construction (High speed method)
  - Steel pipe piles construction (New birth pile method)
12. Correcting foundation structure construction

Affiliated company: Base corporation Inc.,

Ground investigation/Analysis/Guarantee  
Phone: 81-276-55-3331 Fax: 81-276-33-9156





# Foundation construction guidance

To choose the best construction method, we put topography, ground site, surrounding environment and other conditions of construction sites into consideration. Available to deliver constructions with cheaper, faster and better quality. We make efforts to reduce of oscillations and noise pollution considering surrounding area of construction sites.

## *Hard ground adaptable drilling system by down the hole*

### Down the hole hammer method (A method)



H400\*400 L=14.0Mx60 Tk-550



φ216.3 L=6.5Mx25 RX-2000(0.7m<sup>3</sup>)

### Down the hole hammer method (B method)



φ550(Landslide control steel pipe piles) L=17.0M~22.0Mx37 Table machine(RTP-680A)

### Assembling and disassembling of temporary pier construction



H400\*400(support piles) L=7.5M~33.0Mx56 Setting pier construction 588m<sup>2</sup> Crawler crane 80t(suspension type) RX-2000(0.7m<sup>3</sup>)



# MOVAX method

## New suggestion for Lower empty-headed and long-sized piling construction

MOVAX method is a construction method using hydraulic type vibro hammer with hydraulic mounting shovel. It features the side grip method and the latest control system. Old hydraulic type vibro hammer with hydraulic mounting shovel had pile length restrictions. After adopting the side grip method, it became available up to 15m pile in length.

Features

1

### Side grip method

By adopting side grip method, safer and faster constructions can be operated under various construction sites' restrictions.

Features

2

### Automatic control system

By installing the automatic control system, confirmation of pile positioning and verticality is available anytime. Also pile depth can be confirmed on the display.

Features

3

### Low noise•Low vibration

By adopting the hydraulic vibro system with variable eccentricity moment, driving with high frequency became available. Bu reducing vibration by resonance of surrounding structure enable low noise and vibration construction.

Features

4

### Adaptable to various pile material

A modular-unit which uses multi clamp of side grip enable us to carry out the pile construction with various pile material. Multi clamp is applicable to various size and shape.

Side Grip

End Grip



Offers great performance in height restricted indoor construction.

Applicable piling



Sheet pile  
400-1200mm



H steel  
H180-H500



Steel pipe  
φ90-610mm



Grip



Pitching of pile & Pile installation



Final pile installation

# HySPEED method

An improved ground resistance method, [HySPEED] is a method, that only uses natural material crushed stones to improve ground stabilities without using bonding material like cement.



*A new construction method to improve resident ground stabilities using natural crushed stones.*

By using the HySPEED method, industrial waste produce by using cement and steel piling can be eliminated. The effect of high alkaline and hexavalent chromium in cement composition in the soil might result to serious soil pollutions. HySPEED method uses only the crushed stones and the air. We do not use recycled crushed stones but crushed stones made from natural stones. This is an environmental preservation type to improve ground stabilities and minimize environmental load by making use of 100% natural material and ground characteristics It also protect customers' health and property.

## Health consideration

HySPEED method uses only natural crushed stones.

HySPEED method uses only natural crushed stones! No need to worry about ground pollution nor any other toxic substance contamination like hexavalent chromium. We properly check the improved results by using the plate loading test after improving ground stability construction

\*Public constructions or large size constructions will not have post testing conducted.

## Assets consideration

HySPEED method protects your assets

HySPEED method protects your assets! When soil contamination occurs, buried objects lower the asset value of the properties. Since crushed-stones pilings were made from the natural material, they will not contaminate the soil.

## Environmental consideration

HySPEED method has zero CO<sub>2</sub> emissions

Comparing to the ordinary improving ground stability construction, Hy Speed is expected to have significant CO<sub>2</sub> reduction due to no CO<sub>2</sub> emissions from the raw material. According to our investigations, ordinary constructions use cement and steel pipes during production process, cement generate 723kg per ton and steel pipes generate 1,640kg per ton of CO<sub>2</sub>.

## New technology [piston bulb] loaded

By using the tipping drill part of the piston bulb for digging and compacting crushed stones, it significantly shorten construction time in compare to using hammer rolling compaction function of the piston bulb.



## Ecology construction method to protect residence

No soil pollution  
No Ground water pollution

Construction with setting ground  
guaranteed surety companies

No land price fall (Future removal not needed)

Prevent liquefaction

Maximized CO<sub>2</sub> emissions deduction



Comparing to Steel pipe piles

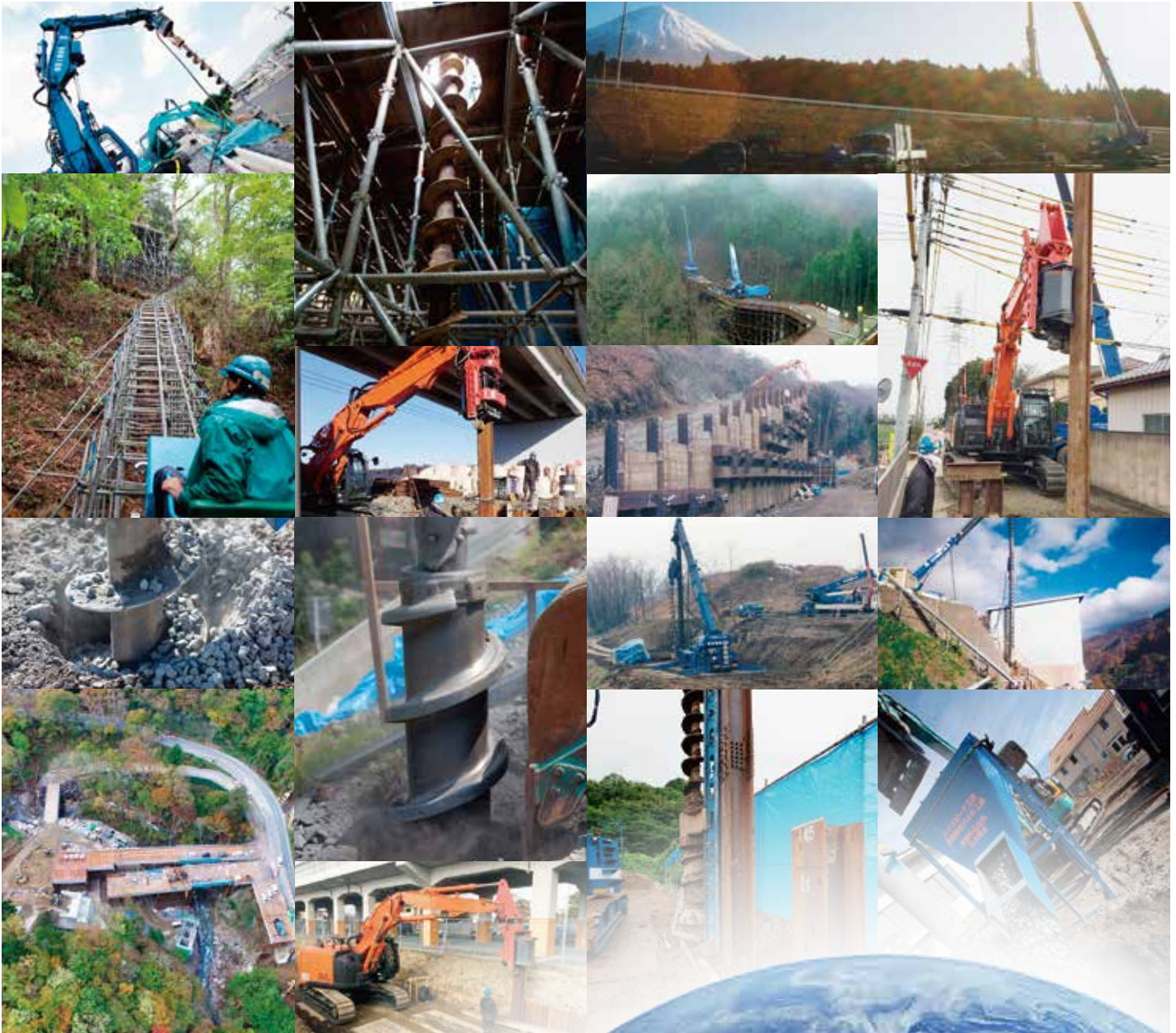


Construction site after complete construction



Post testing (plate loading test) is always performed.





**We have been engaging in piling industry for over 30 years and we are operating.**



 Hide Industrial Machinery Co., LTD

NY tenant building Suite 203, 485-2 Toriyama Shimo-cho, Ota-city,  
 Gumma-prefecture, 373-0063, Japan  
 Phone: 81-276-33-9155 Fax:81-276-33-9156  
 Web: <http://www.hide1191.jp>

